





**TRINA**

## GLOBAL

### Martin Renggli

Global Sales Director

Tel +41 44 905 20 10

[martin.renggli@trinabio.com](mailto:martin.renggli@trinabio.com)

### Mira Goel

Jr. Global Sales Manager

Tel +41 44 905 20 10

[mira.goel@trinabio.com](mailto:mira.goel@trinabio.com)

### Dr. Tim Kamber

Scientific & Compliance Officer

Tel +41 44 905 20 10

[tim.kamber@trinabio.com](mailto:tim.kamber@trinabio.com)

### Mona Seuffer

Global Sales Assistant

Tel +41 44 905 20 10

[mona.seuffer@trinabio.com](mailto:mona.seuffer@trinabio.com)



## ASIA

### Takahito Tomizawa

富澤 崇人

Director Of Sales Asia

Tel +41 44 942 38 64, direct

Mobile +41 79 610 53 86, WhatsApp, SMS, Call

LINE ID takasuisu

[takahito.tomizawa@trinabio.com](mailto:takahito.tomizawa@trinabio.com)

### Ellen Kobelt

楊岱昕

Asia Sales Manager

Tel +41 44 905 20 19, direct

Mobile +41 79 391 64 52

[ellen.kobelt@trinabio.com](mailto:ellen.kobelt@trinabio.com)

### Ryoma Ikehata

池端 竜馬

Japan Junior Sales Manager

Tel +41 44 942 38 64, direct

[ryoma.ikehata@trinabio.com](mailto:ryoma.ikehata@trinabio.com)






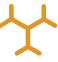



WELCOME TO



TRINA

*Take the tour!*

<b>ABOUT TRINA</b>	Trina Providing Solutions	5	
	Customized Solutions	6	
<b>SERUM AND PLASMA</b>	Human Processed Serum	7	
	Human Serum off-clot	8	
	Plasma & Blood Components	10	
	Animal Serum & Cell Culture	13	
<b>DISEASE STATE PLASMA</b>	General & Infectious	15	
	Hepatitis	16	
	Autoimmune & Allergy	16	
	Cardiac & Coagulation	17	
	Tumor	17	
<b>CLINICAL SPECIMEN</b>	Patient Samples	18	
	Customized Collection	18	
<b>CONTROLS AND CALIBRATORS</b>	Categories	20	
	OEM Manufacturing	21	
<b>ANTIGENS AND ANTIBODIES</b>	Antigen Production	23	
	Antigens	23	
	Antibodies	23	
<b>CELL CULTURE PRODUCTS</b>		24	
	Human Serum & HPL	24	
	Reagents	24	
	Animal Sera	24	
	Buffers	24	

# ABOUT TRINA | TRINA PROVIDING SOLUTIONS

Customized Quality Products



- **Serving the global Diagnostic & Pharmaceutical Industry since 1994 in over 40 Countries**
- 

- **Headquarter in Zurich, Switzerland**
- 

- **Production sites in Zurich and USA**
- 

- **Collection sites worldwide**
- 

- **ISO 13485:2016 Certified**
- 

- **50 TRINA Employees in Zurich, Turnover 2022: 30 M US\$**
- 

- **Two production sites for processed Serum & Plasma, 50.000 l annually**
- 

- **Blood banks with >100.000 donors (Joint venture)**
- 

- **Global Disease State Network, with clinics and medical centers worldwide for specimen collection**
- 

- **Access to 500'000 Individuals**
- 

- **Joint ventures for large industrial grade Antigen purification**



## ABOUT TRINA | CUSTOMIZED SOLUTIONS

Product application & modification stream

### Base level

Serum off-the Clot	SN0200	donor selection
K3EDTA Plasma, single	NPO992	serum / plasma matrix
ant-HBs negative Source Plasma	NPO210	custom screening
HAV IgM positive	DH1102	serology testing
Male Human Serum	SN0300	pooling

### Processed level

Basematrix, Male only	SP1819	defibrination
trinaBase® II - zero base	SP1831	lipid stripping
IgE free	SP1844	dialyze
Processed, all Hep. negative Serum	SP1905	dextrane stripping
Enzyme free	SP1840	diafiltration
trinaBase® II	SP1811	analyte adjusting
anti-HCV positive, inactivated	DH1301	heat inactivation
T3/T4 free Serum	SP1842	heavy charcoal stripping
Copper/Zinc free Serum	SP0900	resin stripping
Ferritin free Plasma	SP1836	affinity stripping
RF positive Diluent	DA1708	cascade filtration, 0.2 µm

### Control level

SS-A Antigen	A1814	level adjustment, spiking,
HBsAg AD	AO835	recovery & regeneration
CK-MB Control	CD3110	proprietary stabilization,
TC/TG/HDL/LDL Calibrator	CL1130	cryoprotectants & antioxidants
Toxo IgM Control	DM1902	custom validation / analysis
EBNA IgA Calibrator	DV1058	custom filling
CMV IgM QC Controls	DV1052	lyophilized
K3EDTA / Serum matched Samples	NMO800	2 ml aliquot, custom-label, box



## SERUM AND PLASMA | HUMAN PROCESSED SERUM

**basematrix | negative matrix | processed plasma**

Human Processed Serum is available with different chemical profiles, obtained through hightech procedures and are supplied specially adapted to customer's requirements.

All materials are single donation tested at the blood bank according to FDA regulations and / or methods cleared in compliance with the European Directive, unless otherwise specified.

### TRINABase®

CODE	SPECIFICITY	SOURCE	FORM
SP0810	trinaBase® I	human plasma	defibrinated
SP1810	Basematrix, ASO / IgG Specification	human plasma	delipidized
SP1830	trinaBase® II-Molecular	human plasma	delipidized
SP0850	trinaBase® III (analytes adjusted)	human plasma	defibrinated
SP0520	anti-HAV neg	human plasma	defibrinated
SP0820	Basematrix anti-HBs negative	human plasma	defibrinated
SP1842	T <sub>3</sub> / T <sub>4</sub> free	human plasma	delipidized
SP0855	Steroid Free	human plasma	delipidized
SP1837	Tg and anti-Tg free	human plasma	delipidized
SP1861	D-Dimer free	human plasma	delipidized
SP1850	E2 free, charcoal stripped	human plasma	delipidized

### Basematrix

CODE	SPECIFICITY	SOURCE	FORM
SP1712	IgE / Allergy stripped	human plasma	delipidized
SP1747	Insuline free, resin stripped	human plasma	delipidized
SP1836A	Ferritin, affinity stripped	human plasma	delipidized
SP1844	IgE free	human plasma	delipidized
SP1845	TSH affinity stripped	human plasma	delipidized
SP1846	IgG free	human plasma	delipidized
SP1849	beta-2-M free	human plasma	delipidized
SP1854	AFP free, affinity stripped	human plasma	delipidized
SP1858	CEA affinity stripped	human plasma	delipidized
SP1859	CA 19-9 affinity stripped	human plasma	delipidized



# SERUM AND PLASMA | HUMAN SERUM OFF-CLOT

human serum | NHS | off-the-clot | true serum | OTC

Special testing and screening upon customer’s request. TRINA BIOREACTIVES can access most testing systems and reagents through our partner laboratory network.

## Standard

CODE	SPECIFICITY	FORM
SN0100	Standard, non gender specific	pooled
SN0200	Standard, non gender specific	single donation
SN0205	Flash frozen	single donation
SN0300	Male only	pooled
SN0301	Male only	single donation
SN0400	Female only	pooled
SN0401	Female only	single donation

## Hepatitis anti-HBs negative

CODE	SPECIFICITY	FORM
SN0110	Standard, non gender specific	pooled
SN0210	Standard, non gender specific	single donation
SN0310	Male only	pooled
SN0311	Male only	single donation
SN0410	Female only	pooled
SN0411	Female only	single donation

## Hepatitis anti-HBc negative

CODE	SPECIFICITY	FORM
SN0120	Standard, non gender specific	pooled
SN0220	Standard, non gender specific	single donation
SN0320	Male only	pooled
SN0321	Male only	single donation
SN0420	Female only	pooled



## SERUM AND PLASMA | HUMAN SERUM OFF-CLOT

human serum | NHS | off-the-clot | true serum | OTC

All materials are single donation tested at the blood bank according to FDA regulations and/or methods cleared in compliance with the European Directive.



### Hepatitis anti-HBs and anti-HBc negative

CODE	SPECIFICITY	FORM
SN0130	Standard, non gender specific	pooled
SN0230	Standard, non gender specific	single donation
SN0330	Male only	pooled
SN0331	Male only	single donation
SN0430	Female only	pooled
SN0431	Female only	single donation

### Hepatitis anti-HBs / anti-HBc and anti-HTLV-I / II negative

CODE	SPECIFICITY	FORM
SN1130	Standard, non gender specific	pooled
SN1230	Standard, non gender specific	single donation
SN1330	Male only	pooled
SN1331	Male only	single donation
SN1430	Female only	pooled
SN1431	Female only	single donation

### Hepatitis anti-HAV negative

CODE	SPECIFICITY	FORM
SN1120	Standard, non gender specific	single donation
SN1121	Standard, non gender specific	pooled



# SERUM AND PLASMA | PLASMA & BLOOD COMPONENTS

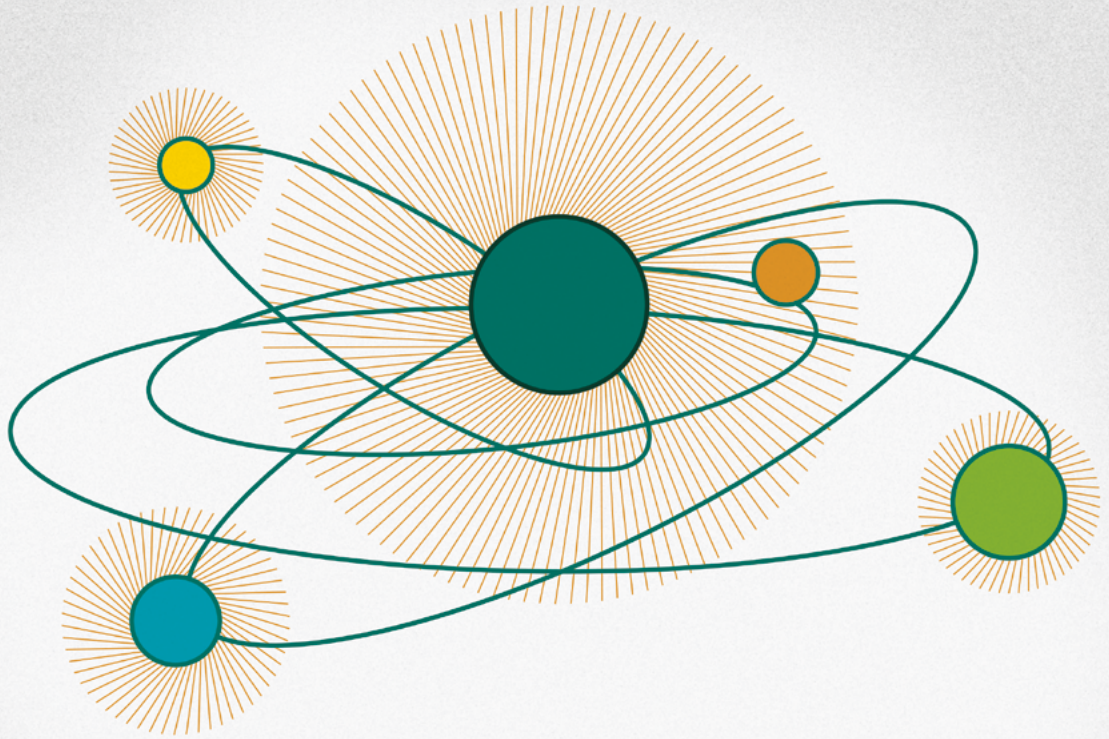
source plasma | plasmapheresis | custom matrix

## Human Plasma

CODE	SPECIFICITY	FORM
NPO130	anti-HBs negative source	single
NPO210	anti-HBs negative source, customized	single
NPO230	anti-HBs & anti-HBc negative source	single
NP1201	anti-HTLV I/II negative source	single
NP1230	anti-HBs & anti-HBc & anti-HTLV- I/II neg. source	single

## Custom Anticoagulants

CODE	SPECIFICITY	FORM
NPO100	Normal Plasma, CPD-A	single
NPO101	Normal Plasma, CPD-A	pooled
NPO110	ACDA Plasma	single
NPO200	Normal Plasma, Citrate	single
NPO201	Normal Plasma, Citrate	pooled
NPO300	Normal Plasma CPD	single
NPO301	Normal Plasma CPD	pooled
NPO400	Normal Plasma CP2D	single
NPO401	Normal Plasma CP2D	pooled
NPO990	Normal Plasma, Lithium Heparin	single
NPO992	Normal Plasma, K3 EDTA	single
NPO993	Normal Plasma, K2 EDTA	single
NPO994	Normal Plasma, Na2 EDTA	single
NPO995	Normal Plasma, Sodium Heparin	single
NPO998	Normal Plasma Sodium Fluoride	single
NP1990	Normal Plasma, Lithium Heparin	pooled
NP1992	Normal Plasma, K3 EDTA	pooled
NP1993	Normal Plasma, K2 EDTA	pooled
NP1995	Normal Plasma, Sodium Heparin	pooled



# TRINA

We are excellent in OEM manufacturing



## SERUM AND PLASMA | PLASMA & BLOOD COMPONENTS

source plasma | plasmapheresis | custom matrix

### Matched Sets

CODE	SPECIFICITY	FORM
NMo800	K3 EDTA & Serum	single donor
NMo801	K2 EDTA & Serum	single donor

### Human Whole Blood & Blood Components

CODE	SPECIFICITY	FORM
SN0001	Whole Blood	single
SN0010	Erythrocyte / RBC Concentrate	single, pooled
NP0020	Red Blood Cells (Na2 EDTA)	single, pooled
SN0050	Buffy Coats	single
SN0060	SAG-M Red Cells concentrate	liquid
SN0180	Cord blood	single

Any customer given or defined anti-coagulants can be added upon special requirement. Materials will be aliquoted and labeled according to customer's demand and specification.

## SERUM AND PLASMA | ANIMAL SERUM & CELL CULTURE

goat | bovine | sheep



### Trinanima® Animal Serum

CODE	SPECIFICITY	FORM
TP0200	Plasma Diagnostic Base, bovine	0.2 µm filtered
TP0210	Plasma Diagnostic Base special, bovine	0.2 µm filtered
TP0300	Adult Bovine Donor (virus free)	unfiltered
TP0430	Donor Calf (virus free), bovine	unfiltered
TP0500	Donor Horse (virus free)	unfiltered
TP0700	Donor Goat (virus free)	unfiltered
TP1200	Mouse Serum	0.2 µm filtered
TP1201	Mouse Plasma, EDTA Plasma	unfiltered
TP1300	Adult Bovine Donor (virus free), bovine	0.2 µm filtered
TP1315	Adult Bov. Serum Gamma free, bovine	0.2 µm filtered
TP1396	Don. Bov. Serum, delip Aerosil, bovine	0.2 µm filtered
TP1430	Donor Calf (virus free), bovine	0.2 µm filtered
TP1500	Donor Horse (virus free)	0.2 µm filtered
TP1590	Horse Serum, de complemented	liquid
TP1700	Donor Goat (virus free)	0.2 µm filtered
TP1780	Rat Serum	unfiltered
TP1781	Rat Plasma, EDTA Plasma	unfiltered
TP1783	Rat Plasma, Na-Citrate Plasma	unfiltered
TP1790	Rat Serum, heat inactivated	de complement.
TP1800	Sheep Serum	unfiltered
TP1801	Sheep Serum	0.2 µm filtered
TP2101	Minipig Plasma, EDTA Plasma	liquid
TP3300	New Born Calf Serum, bovine	0.2 µm filtered
TP4000	Cynomolgus Plasma, EDTA Plasma	unfiltered
TP7700	Guinea pig Serum	raw serum
TP7710	Rabbit Serum	0.2 µm filtered
TP7711	Rabbit Plasma	liquid
TP9102	BSA Cohn Fraction, bovine	powder

Serum originates from virus free closed donor herds, with a minimal batch to batch variation. TRINA BIOREACTIVES has a large expertise in animal specialities, please ask our team for advice. Upon request the animal sera is 0.2 µm filtered and gamma-irradiated. Raw serum is unfiltered. Pack size is made to fit customer specifications. The animal sera are derived from healthy animals as determined by clinical examination of a registered veterinary. Each product is supplied with appropriate quarantine documentations necessary for the import into each country.



# SERUM AND PLASMA | ANIMAL SERUM & CELL CULTURE

cell growth media | culture media

## Customized Cell Culture Media

TRINA BIOREACTIVES specializes in the production of special formulation media and solutions exactly suitable to the customer's specifications. The products are produced, sterile filtered and aseptically filled in dedicated clean rooms.

### Serum Media

CODE	NAME	SPECIFICITY
MC0400	Albumin Solution	20 – 30% solution Albumin solution
MC2000	Lipid Concentrate	Cholesterol, phospholipids and fatty acids
MC3000	BSA Lipid enriched Matrix	BSA enriched with BCC
MC4050	Transferrin Matrix	Transferrin based Cell Growth Medium
MC1500	Human Platelet Matrix	Animal free FBS replacement Media
SN0500	AB human Serum	Pure human AB Serum for culture Media
TP3310	FBS Serum	High quality FBS
TP3300	Donor Calf Serum	Collected from USDA licensed premises
TP0300	Donor Bovine Serum	Collected from USDA licensed premises
TP0715	Porcine Serum	Collected from USDA licensed premises

Materials can be charcoal stripped, heat inactivated, delipidized or processed in any possible way.

- High quality raw materials, sterile filtration
- Short production times; normally within 2 – 4 weeks
- Flexible packaging
- 20 years of experience in matrix production



## DISEASE STATE PLASMA | POSITIVE CONTROL MATERIALS

positive plasma | control material | infectious disease analytes

From 10 ml to 100 l pool batches

Adenovirus IgM	Gonorrhea positive plasma	Q-Fever IgM
Anti-Streptolysin O antib. (ASO)	Haemophilus influenza IgM	Rhinovirus IgM
Barmah forest IgM	Hantavirus positive	Ross-River IgM
Bordetella pertu. IgM pos. Plas.	Helicobacter pylori	Rubella IgM
Brucella IgM pos.	HIV Type 1+2	Rotavirus
Campylobacter	HSV I+II IgM	RPR positive
Candida IgM pos.	HTLV I/II positive plasma	RSV
Chagas antibody	Human anti Mouse antibo. HAMA	Rubella IgM
Chikungunya pos.	Human Herpesvirus IgM	SARS-CoV-2 before vaccination
Chlamydia pneumoniae	Infectious Mono (EBV)	SARS-CoV-2 IgM pos.
Chlamydia trachomatis	Influenza A	SARS-CoV-2 PCR pos. Swab
CMV DNA positive	Influenza B (plasma)	SARS-CoV-2 Vaccin. plasma
CMV IgM	Japanese Encephalitis	Streptococ. pneumoniae pos.
Coxiella	Legionella antibody	Syphilis IgM pos
Coxsackie pos	Leishmania	TBE (Tick-B Enceph.) IgM pos.
C-Reactive protein (CRP)	Leptospira IgM	TORCH positive
Cryptococcus neoformans	Lyme IgM	Toxocara Canis
Dengue IgM	Malaria positive	Toxoplasma IgM
Dengue NS1	Measles IgM	Toxoplasma IgM high avidity
EBNA IgM	Mumps IgM	Treponema Pallidum IgM
EBV DNA positive	Myasthenia gravis	Trichomonas vaginalis
EBV Early Antigen (EBV EA)	Mycoplasma IgM	Typhoid Fever IgM
EBV IgM	Mycoplasma pneumonia	VZV IgM
E-Coli	Myeloma antibody	West Nile Virus positive
Enterovirus pos.	Neisseria gonorrhoeae	Yellow Fever
Francisella IgM	Norovirus	Yersinia IgM
FSME	Parvovirus B19 IgM	Zika

[genotyped / viral load / panels / characterized]



## DISEASE STATE PLASMA | POSITIVE CONTROL MATERIALS

positive plasma | control material | infectious disease analytes

From 10 ml to 100 l pool batches

### Hepatitis

HAV IgG positive	HBe positive	HBsAg positive speci. w. Muta.
HAV IgM positive	HBeAg positive	HBV DNA positive
HAV positive (total)	HBs positive (total)	HCV Antigen positive
HBc IgG positive	HBs positive (total) Panel	HCV positive
HBc IgM positive	HBs/HBc positive	HCV pos/ HCV PCR negative
HBc positive (total)	HBsAg positive AD /AY	HDV positive

### Autoimmune & Allergy

Allergen Specific IgG	Diabetic Type I	Smooth Muscle antib (ASMA)
Allergy IgE Serum Panel	Diabetic Type II	SS-A (monospecific)
Antinuclear Antibodies (ANA)	Elevated Total IgE	SS-B positive Plasma
anti-Phospholipid syndrome	Hashimoto/Graves Dis. antib.	Thyroglobulin antibody
anti-Tg/ anti-TPO Positive	Multiple allergy	Tiss.Transglutaminase (tTG)
beta-2-Glycoprotein antibody	Rheumatoid Arthritis pos.(RA)	TPO antibodies
CCP positive	Rheumatoid Factor (RF)	TSH
Celiac	Sjogren's syndrome	TSH Receptor Ab Positive
Crohn disease	SLE	

The full list of Disease State Plasma is available at [www.trinabio.com](http://www.trinabio.com)



# DISEASE STATE PLASMA | POSITIVE CONTROL MATERIALS

positive plasma | control material | infectious disease analytes



From 10 ml to 100 l pool batches

## Cardiac & Coagulation

Activ. Protein C APC-R Plasma	Factor VII abnormal	Fletcher Factor Deficient
anti-HLA	Factor VII Deficient	Hemolyzed specimens
Coagulation Plasma diversos	Factor VIII Deficient	Hemophilia
Coumadin Plasma	Factor X abnormal	Lipaemic plasma
D-Dimer-Positive	Factor X Deficient	Lupus anticoagulant
Factor II abnormal	Factor XI abnormal	Lupus IgG
Factor II Deficient	Factor XI Deficient	Plasminogen Activ. inhibitor (PAI)
Factor IX abnormal	Factor XII abnormal	Protein "S" Congenital Deficient
Factor IX Deficient	Factor XII Deficient	Protein "S" Deficient
Factor V abnormal	Fibrinogen Deficient Plasma	Von Willebrand Factor
Factor V Deficient	Fibrinogen low	NT-proBNP control

## Tumor

AFP Control	CK-MB positive plasma	Ovarian cancer
Beta-2-Microglobulin	Colon cancer	Pancreatic cancer
Bladder Cancer	Colorectal Cancer	PIVKA-II Positive
Breast cancer	Cyfra positive	Prostate cancer
CA125 positive	Cystatin-C Control	Prostate Specific Antigen
CA15-3 positive	Esophageal cancer	Renal Cell Carcinoma (RCC)
CA19-9 Positive	Head and neck cancer	SCLC (Small Cell Lung Canc.) patient
CA72-4 positive	Kidney Cancer	Stomach cancer



# CLINICAL SPECIMEN | PATIENT SAMPLES

pre-clinical specimen | patient samples | interferences

TRINA BIOREACTIVES provides biological material for research in diagnostic and pharmaceutical industries. Collected specimen are fully compliant with actual ethical and regulatory criteria (IRB approval / ICF documentation).

## Worldwide collection centers

- Infectious Disease
- Oncology
- Cardiac Disease
- Autoimmune

- Normal / Healthy Donors
- Endocrinology
- Diabetes
- Genetic Disorders

## Diagnostic / Therapeutic Markers

- Quality Control
- Kit Development
- Assay Validation
- Instrumental Perform. Validation

0.5 - 2 ml  
Retrospective



## Material Characterisation

- Different Matrixes (Serum, EDTA, LiHep, etc.)
- Multibleeds (same donor in different Matrixes)

2 - 20 ml  
Retrospective



## Clinical Set-up

- Customized Protocols
- Multiple Biosamples

20 - 800 ml  
Bulk



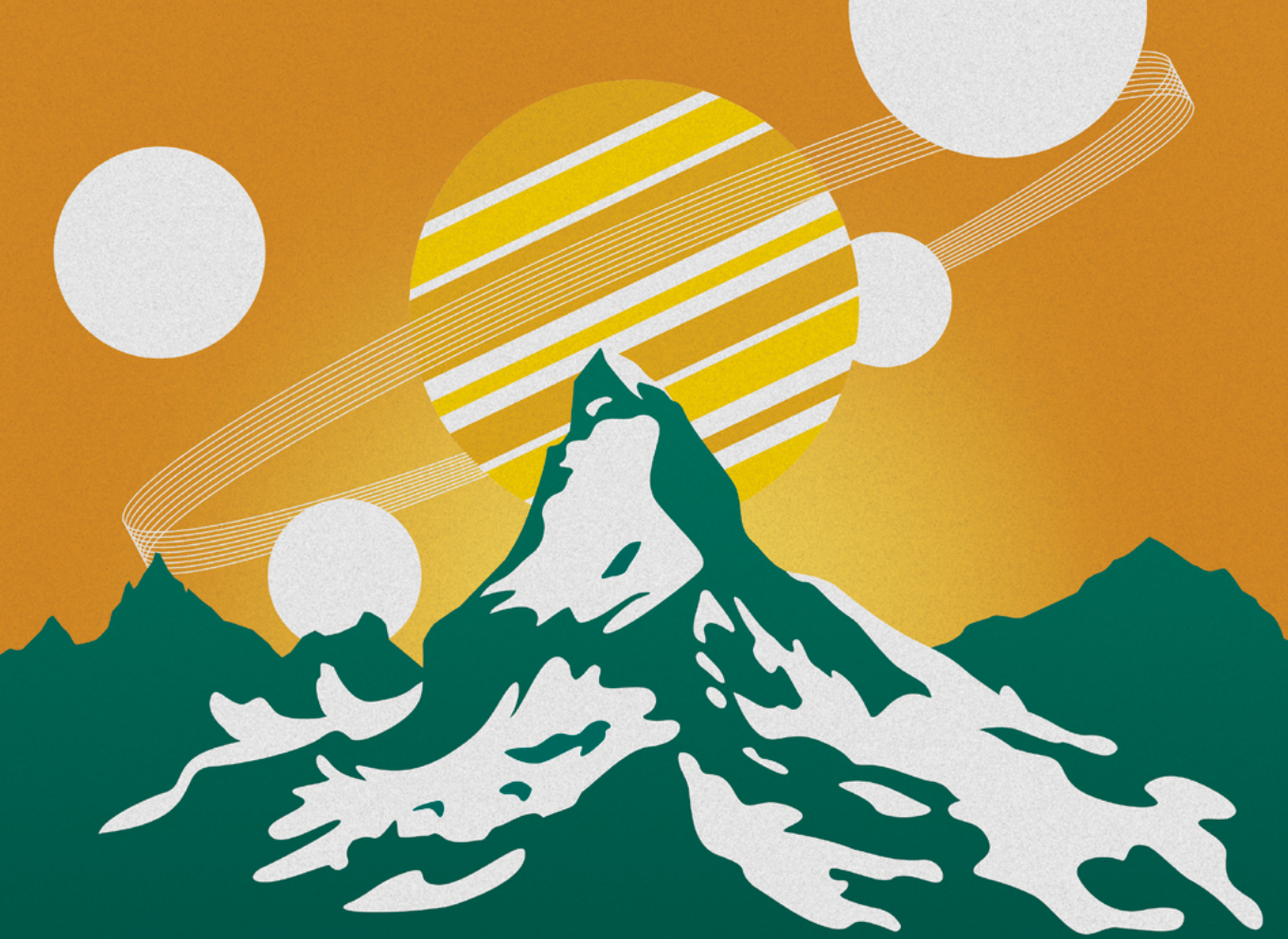
## Clinical Data

- Patient Data (Age / Gender / GT)
- Detailed Anamnesis (prospective)

Over **50'000 donors** for biospecimen from globally different diagnostic and demographic individuals. (Europe, Asia, Americas, Africa).

**Different Matrixes** (Serum, EDTA, LiHep, etc.) & **Multibleeds 1 - 800 ml** per Donor.

Clinical Data: **Patient Data** (Age / Gender / GT) Detailed Anamnesis (prospective).

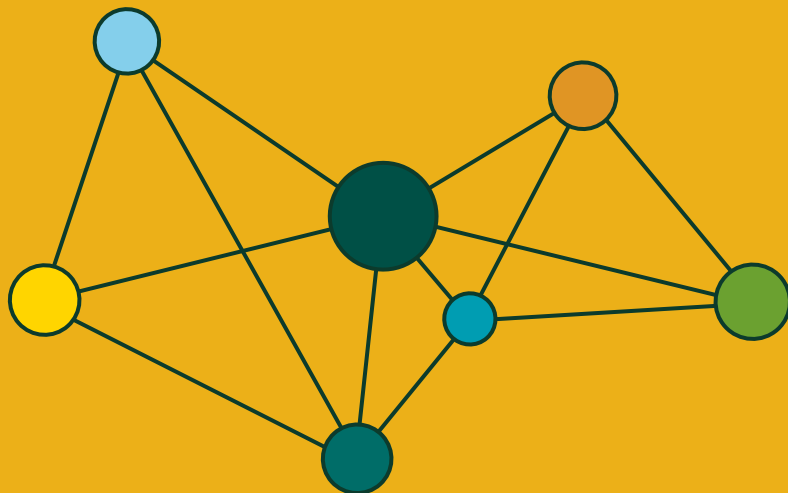


# TRINA

We analyse, plan and organise your global supply chains



## TRINA CONTROLS & CALIBRATORS | CATEGORIES



### General Chemistry

Liquid & Lyophilized Chemistry  
Chemistry & Lipid Linearity  
Lipid Profile Controls

### Tumor & Cardiac

Multi Analyte Immunoassay  
Cardiac Marker Cont. & Calib.  
Tumor Marker Cont. & Calib.  
Specialty Bone & Hypertension

### Infectious AND Disease State

TORCH / STD / MMR  
Hepatitis Cont. &  
All Virus neg. Cont.  
TORCH IgG/IGM Control  
Zika / Dengue Control

### Speciality Controls

Immunology Control  
ASO / RF / CRP Control  
Autoimmune Control  
Urine Chemistry Control  
Vitamin D Control

### Coagulation

Coagulation Cont., Lyophilized  
Coagulation Cont. Factor

### Diabetes Monitoring

Glycated Hemoglobin A1c  
Special Diabetes  
HbA1c Liquid Control / Veri.

### Proficiency testing

Custom formulations

# TRINA CONTROLS & CALIBRATORS | OEM MANUFACTURING

controls | calibrators



## OEM Manufacturing

TRINA Manufactures customized bulked and vialled controls, calibrators and panels. Through our scalable and lean production design, we ensure low cost and consistency in many IVD supply chains worldwide. Our strength lies in the customization and adaption of each product, while having an unrivaled access to raw materials, antigens, plasmas and components.

controller level process

### 1. Human Plasma / Serum

- Characteristics: Matrix, Population, Regulatory
- Titer: Assay / Subtyping / IgG / IgM / Viral load / Antigen load

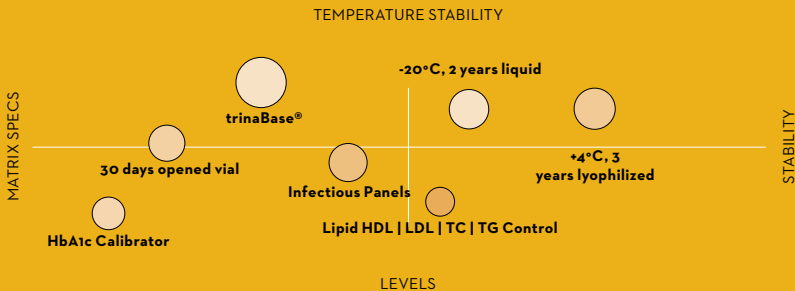
### 2. Processed Plasma

- |                                     |                     |
|-------------------------------------|---------------------|
| • Filter Method                     | • Processing Method |
| • Buffer                            | • Defibrination     |
| • Antimicrobial / Antifungal Agents | • Delipidation      |
| • Proprietary Stabilization         | • Dialyse           |
| • Heat treatments                   | • Level adjustment  |

### 3. Controls / Calibration / Proficiency testing / Panels

- |                                 |                            |   |
|---------------------------------|----------------------------|---|
| • Natural Enzyme immobilization | • Stability Data           | • Additives for Lyophilization / Liquid Stability |
| • Protease Inhibitors           | • Vial Selection           |   |
|                                 | • Additives / Antioxidants | • Cryoprotectants                                 |

## Aliquot Volume / Vial / Packaging





## CONTROLS & CALIBRATORS OEM

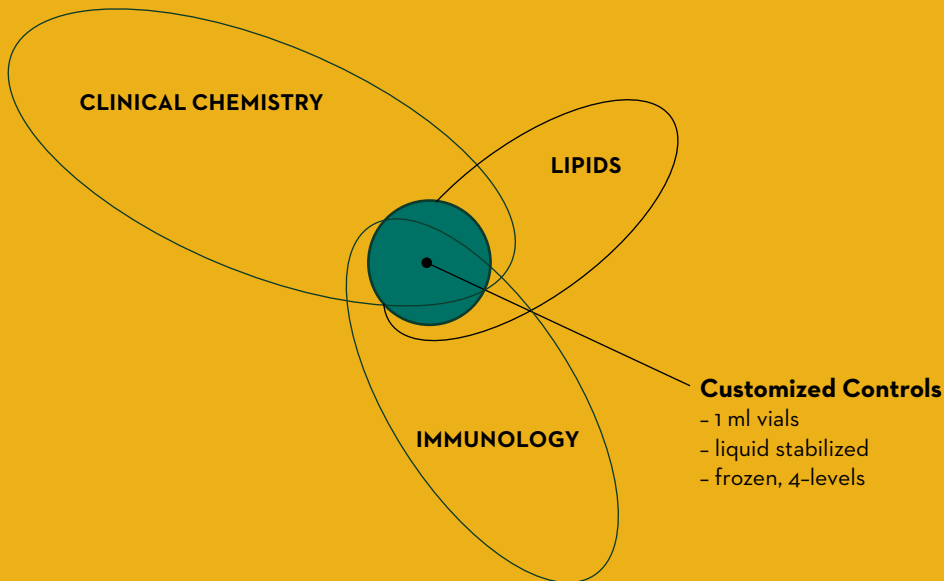
clinical | controls | calibrators | panels | proficiency testing

### Custom controls - choose from over 500 analytes

- 3 years shelf life at -20°C to -80°C
- Thawed and unopened stability for over 30 days at +2-8°C
- > 14 day open-vial stability at +2 - 8°C for most analytes
- Formulated for manual and automated platforms
- Liquid, ready to use or lyophilized for long term storage
- 0.2 - 10ml vials, liquid, frozen or lyophilized, labeled

### Analyte classes

- Clinical Chemistry / Cardiac
- HbA1c / Glucose
- Lipids
- Immunology / Infectious / HBsAg
- Serology
- Immunoassay (Cardiac, TDM, Hormones)
- UIBC



# ANTIGENS & ANTIBODIES | ANTIGEN PRODUCTION

native | purified | cell cultured



**Research / development / production standard calibrators in various assay formats  
immunogens for raising antibodies.**

All products are delivered with testing for mandatory infectious markers as per FDA / CE.

## General

Transferrin Receptor

D-Dimer

Ferritin

IL-18

hCG & + beta hCG

CRP

PAPP-A

## Hepatitis

HBsAg Subtype Ay

HBsAg Subtype Ad

## Cardiac Markers

MPO

CRP

## Prostate Markers

PSA

PSA-ACT Complex

## Autoimmune

SS-A

SS-B

Sm-Antigen

RNP-Sm

Scl-70

Jo-1

pANCA

cANCA

RNP 70

## Renal Markers

A1M

B2M

CYS-C

## Cancer Markers

CA 15-3

CA 125

CA 19-9

CA 72-4

HCG

CEA

AFP

The full list of Antigens is available at [www.trinabio.com](http://www.trinabio.com)



# CELL CULTURE PRODUCTS

culture media | serum-free media

## Human Serum

- Human AB Serum: Converted 1000 l
- Human AB Serum: Off the Clot 500 l

## Human Platelet Lysate (HPL as FBS replacement)

- Custom processed

## Reagents

- Albumin Application
- Human Transferrin in the APO-form.
- Human Transferrin in the HOLO-form.
- RC Transferrin
- Recombinant Human Insulin

## Animal Sera

- Fetal Bovine Serum
- Donor Horse Serum
- Calf Serum
- Goat Serum

## Buffers

- Cell culture media

GMP quality available.



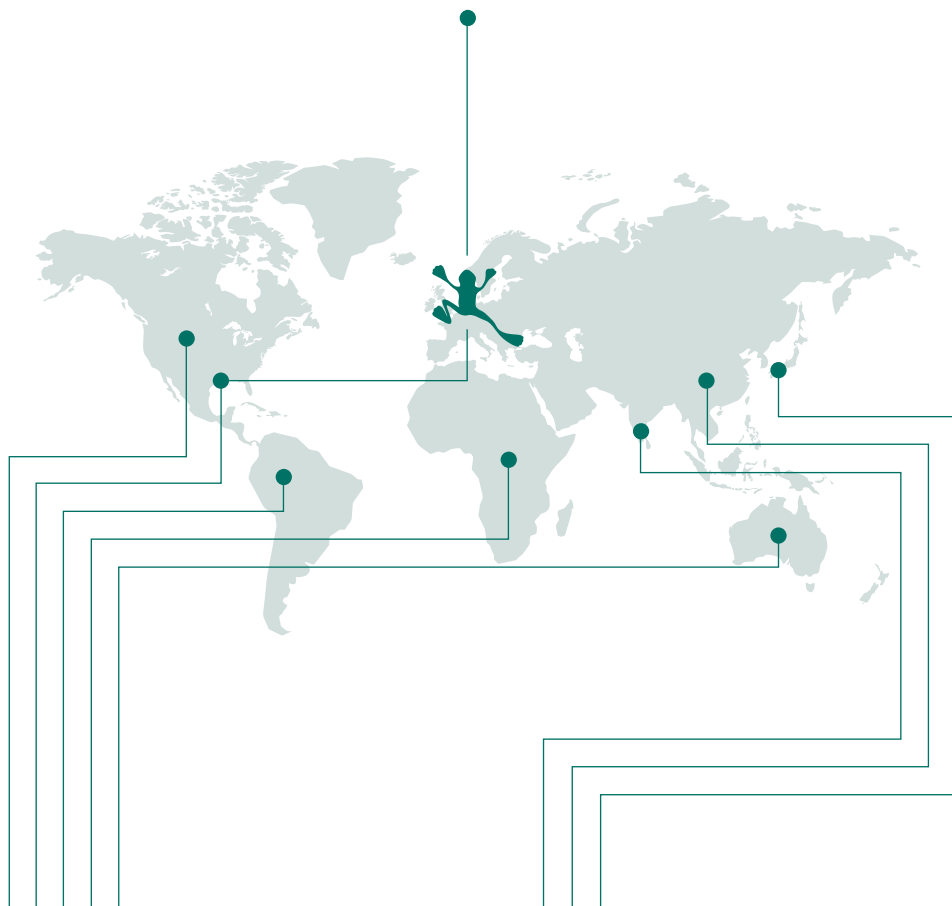


# TRINA

We love to talk personally to you

*Call us!*

## TRINA HEADQUARTERS



**Global Sales Department**  
global\_sales@trinabio.com

**Asia Sales Department**  
asia\_sales@trinabio.com



TRINA

Grabenstrasse 8  
8606 Naenikon  
Switzerland

Visit us online:



[www.trinabio.com](http://www.trinabio.com)  
P +41 44 905 20 10

**TRINA**